

The Be Winter-Ready public information campaign is a “Whole of Government” initiative to provide information on a wide range of topics. Information from Government Departments and Agencies on how to be ready for winter is contained on our website winterready.ie



Be Aware – Drive Safely in Hazardous Conditions

- **Strong winds** - beware of fallen trees, other debris and high-sided vehicles, particularly when overtaking.
- If driving a **high-sided vehicle**, try to anticipate exposed sections of roadway where winds will be stronger.
- **Snow and ice** - are worse in areas of higher ground, try to reroute. Remove all snow and ice from your vehicle roof before you depart.
- Never drive through **flooded roads**. Water can be deeper than it seems. Find another route.
- **Hailstones** - can remain on the road surface. Reduce your speed and avoid braking, if possible.
- Switch on your **fog lights** when driving through fog. Remember to switch off once fog clears.
- **Sun glare** - can dazzle. Reduce speed, clean your windscreen inside and out, and keep a set of sunglasses in your vehicle.
- When **getting out of your vehicle on the road** - ensure to wear a high visibility jacket and use your hazard lights. On a motorway, stand behind the safety barrier and call for assistance immediately.

Be Aware – The Basics in Severe Weather Conditions

- Be informed of all weather and road conditions ahead of your journey.
- Don't take chances - consider postponing your journey.
- Prepare your vehicle before setting off.
- Give yourself extra time to allow for delays.
- Slow Down!

WATCH OUT FOR OTHER ROAD USERS:

Slow Down and give pedestrians, cyclists, and motorcyclists more space when over-taking. They may need to avoid an obstacle in the road, may skid in icy and snowy conditions, or get blown off course in strong winds.

VULNERABLE ROAD USERS – BE SAFE, BE SEEN

Pedestrians: Always use pedestrian crossings and footpaths where available. If no footpath is available, walk on the right-hand side of the road, facing traffic. Wear bright or high visibility clothing.

Cyclists: Take care in very windy or icy conditions. Wear a helmet. Ensure front and rear lights are working.

Motorcyclists: Wear protective equipment. Slow down and ease off the throttle. Ensure front and rear lights are working.



FOR FURTHER INFORMATION VISIT:

www.met.ie For weather forecasts and warnings. Download the Met Éireann App to stay informed.

www.rsa.ie Visit the RSA website (Search Severe Weather) for more detailed advice on driving during severe weather.

If your business operates company-owned vehicles, or you drive as part of your work, for useful advice visit www.hsa.ie/eng/vehicles_at_work/



www.gov.ie
www.winterready.ie

OEP Phone: 01-237 3800
Twitter: @emergencyIE
E-mail: oepp@defence.ie

Be Winter-Ready

ROAD SAFETY

Plan, Prepare, Be Aware



Riailtas na hÉireann
Government of Ireland

Plan – for your Journey

During Severe Weather Conditions;

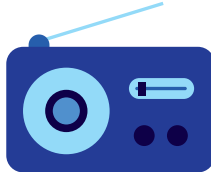
- Consider delaying until weather and road conditions improve.
- Use public transport where available. Check individual Transport operators for possible service disruptions and updates.



If delaying is not possible, prepare by:

- Checking the weather at www.met.ie. The best road conditions are likely to occur between 10am and 4pm but pay attention to weather warnings.
- Visiting Transport Infrastructure Ireland at <https://traffic.tii.ie/> and follow them on Twitter @TIITraffic for live updates on conditions motorways and national road conditions.

- Checking An Garda Síochána website www.garda.ie or Twitter @GardaTraffic for travel warnings and updates on road conditions.
- Tuning into your local radio station for latest updates and Local Authority notices in your county.
- Looking at your route on a map. Don't rely totally on a sat-nav / GPS - Ensure it does not pre-select routes which may be hazardous (narrow back roads or across mountainous areas).



Prepare – for Winter Driving

VEHICLE CHECKS

- Get your vehicle serviced before winter sets in. Ensure it is ready for winter weather conditions.
- Check the brakes, lights, wipers, tyre tread and de-mist functions.

WHAT CAN I DO TO PREPARE MY VEHICLE?

- **Lights** - Ensure all indicators, headlamps and fog lights are clean and working.
- **Liquids** - Ensure the water reservoir is up to the maximum mark and correctly mixed with anti-freeze. Top up your coolant and screen wash.
- **Oil** - Check and top it up when needed. Look for signs of leakages on the ground under the vehicle.
- **Electrics** - Check your dashboard before and after starting the engine. Listen for a weak battery and replace, if necessary.
- **Windscreen Wipers** - Clean them regularly and replace every 12 months.
- **Safety Assist** - Check your vehicle's owner's manual for any extra safety assist technology it may have, e.g. Advanced Braking System (ABS).

YOUR TYRES CAN SAVE YOUR LIFE

- Tyres are your vehicle's only contact with the road.
- Check your tyre treads and pressure, including the spare tyre. The minimum legal limit is 1.6mm for a car (1mm for motorcycles), but a minimum tread of 3mm is advised.

Prepare – for your Journey

If you MUST travel, prepare for severe conditions by:

- Keeping your vehicle fuel tank close to full during the winter. Ensure you have adequate fuel for the journey.
- Allowing extra time and letting someone know your route and your expected arrival time.
- Listening to regular updates from your local radio station.
- Making sure your vehicle has emergency equipment before you leave.

EMERGENCY EQUIPMENT TO HAVE IN YOUR VEHICLE

- High visibility vest
- First aid kit
- A hazard warning triangle
- A torch with charged batteries
- A charged mobile phone – to call for help or find your location's Eircode
- Food and drink supplies



- De-icing equipment: Ice-scraper or de-icing spray
- Appropriate clothing and footwear – if you must leave your vehicle

